



Development of Wind Energy in Lithuania

Vitalijus Auglys
Ministry of Environment of Lithuania



Demand of Renewable Energy

Following the commitments to the EU, LT has to increase the total amount of energy generated renewables up to 7% till 2010

Following the commitments to the EU, LT has to increase the total amount of primary energy generated renewables up to 12% till 2010

Goal: 200 MW installed wind energy capacity till 2010

200 MW should be installed in the 6 competitive zones

After 2010 – deficit of energy production

New strategy for wind energy from 2010

Legal framework



Environmental Impact Assessment (EIA):

Law on the Environmental Impact Assessment of the Proposed Economic Activities of the Republic of Lithuania, 21 June 2005, No. X-258

Recommendations of the Environmental Impact Assessment for Wind Power Plant Installations, approved by the Order of Minister of Environment of the Republic of Lithuania of July 31, 2003, No. 406

Regulations of Determination of Significance of the Effects of Implementation of Plans, Programs and Proposed Economic Activities on Established or Potential Natura 2000, approved by Order of the Minister of Environment of the Republic of Lithuania of May 22, 2006, No. D1-255



Legal framework

Territorial planning:

Law on Territorial Planning of the Republic of Lithuania,
15 January 2004, No. X-1962

*Regulations of Preparation and Issuance of Conditions
for Territorial Planning Documents, approved by the
Order of Minister of Environment of the Republic of
Lithuania of October 17 2006, No. D1-470*



Legal framework

Design, construction:

Law on Construction of the Republic of Lithuania, 8 November 2001, No. IX-583

Technical Construction Regulations: Construction Works of Exceptional Significance, 16 April 2002, No. 184

Technical Construction Regulations: Set of Design Conditions for a Construction Work, 30 April 2002, No. 215

EIA procedure for wind park projects



Screening (determining if EIA is required)

For wind farms screening procedure is required (Annex 2 of Law on EIA)

Possible to start EIA without screening procedure

Scoping phase
(preparation, review & approval of EIA program)

Relevant parties of EIA:
counties,
Local municipalities,
territorial departments of state institutions for health, fire protection and cultural heritage

Preparation and review of EIA report

Justified decision regarding admissibility of the project

Made by competent authority:
Regional Environment Protection Departments



Territorial planning procedure

Master (general)
plan
of Lithuania



Special territorial
planning document



Detailed plan

Searching and implementation of new energy types and production sources is one of the priorities of Energy infrastructure sector

A territorial planning document for establishes the conditions, rights and obligations in using a land plot and developing an activity in it.

Design and construction procedure



Technical design documentation



Construction permit



Construction works



Acceptance of construction works as fit for use



Integration of wind farms into energy system

Preparation, expertises and approval

Institutions involved: Local municipalities, Regional Environment Protection Departments, owners or users of engineering and utility networks etc.



Potential adverse impact

- Landscape
 - Biodiversity
 - Visual – psychological aspects
 - Noise
 - Culture heritage
 - Tourism – recreational areas
 - Socio – economical aspects
-

Concerns of Public



- Significant adverse impact on human health
 - Significant adverse impact on environment (nature)
 - Significant adverse impact on property (changes of property value)
-



Possible conflicts

- Wind farms and State protected areas (nature reserves)
 - Wind farms and Natura 2000
 - Wind farms and Coastal zone
 - Winds farms and other future development
-



Current projects of wind farms

Almost half of 200 MW is installed on land

**Installation of wind farm in the Baltic Sea
(Palanga – Šventoji segment)**

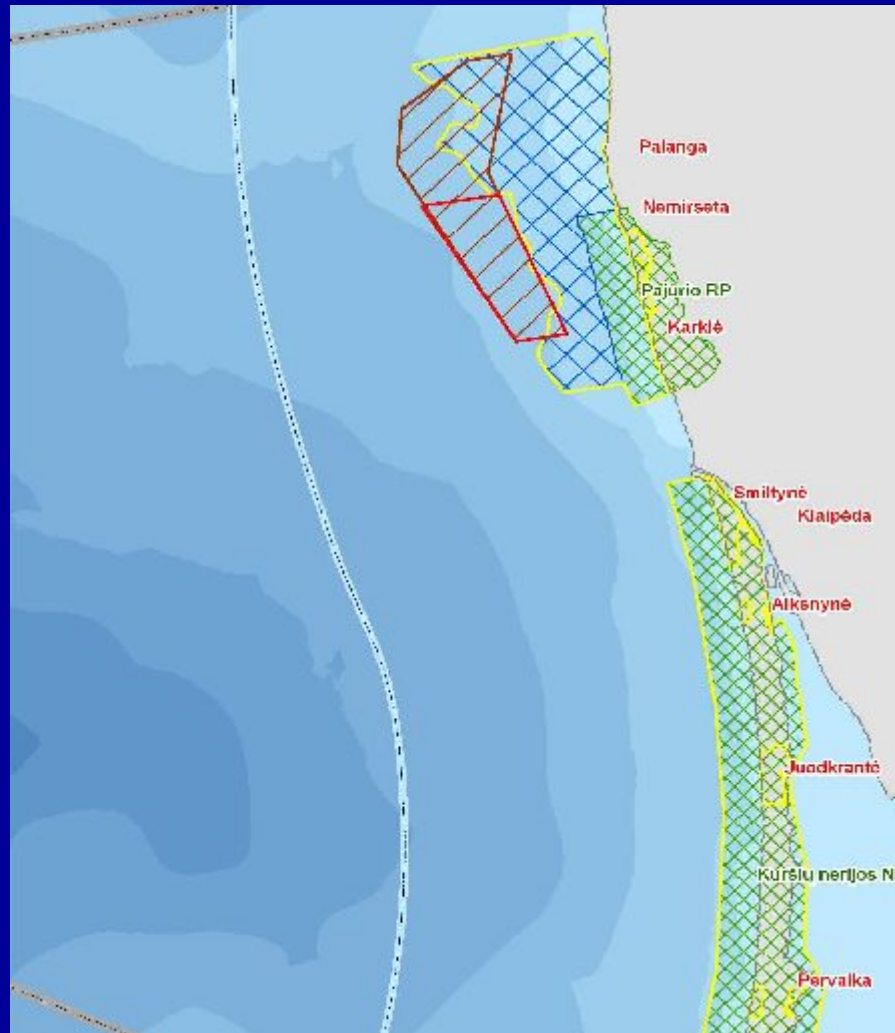
project description: 25 wind power plants, height 80 m,
total power capacity 75 MW

phase: EIA program is approved

problem: objection of local municipalities

main concerns: reduction of recreational potential, visual
impact, impacts on conservative areas

Proposed wind farm location



Wind farm



Natura 2000



Thalassic reserve



State parks



Area for wind park
agreed with LMSA



Next steps

New strategy for wind energy

To review legislation regulating territorial planning and construction processes in the marine zone