



LIETUVOS RESPUBLIKOS  
ŪKIO MINISTERIJA

# EU TARGETS AND ENERGY POLICY IN LITHUANIA

**Evaldas Piesliakas**  
Head of Energy Development Division  
Ministry of Economy

22 April 2008



## **20 x 20 BY 2020**

### **Targets set by European Council in March 2007:**

- Reduction of at least **20%** in greenhouse gases (GHG) by **2020**.
- **20%** share of renewable energies in EU energy consumption by **2020**.



# PROPOSAL FOR A DIRECTIVE ON THE PROMOTION OF THE USE OF ENERGY FROM RENEWABLE SOURCES

- Share of energy from renewable sources in final consumption of energy in Lithuania by **2020 – 23%** (2005 – 15%)

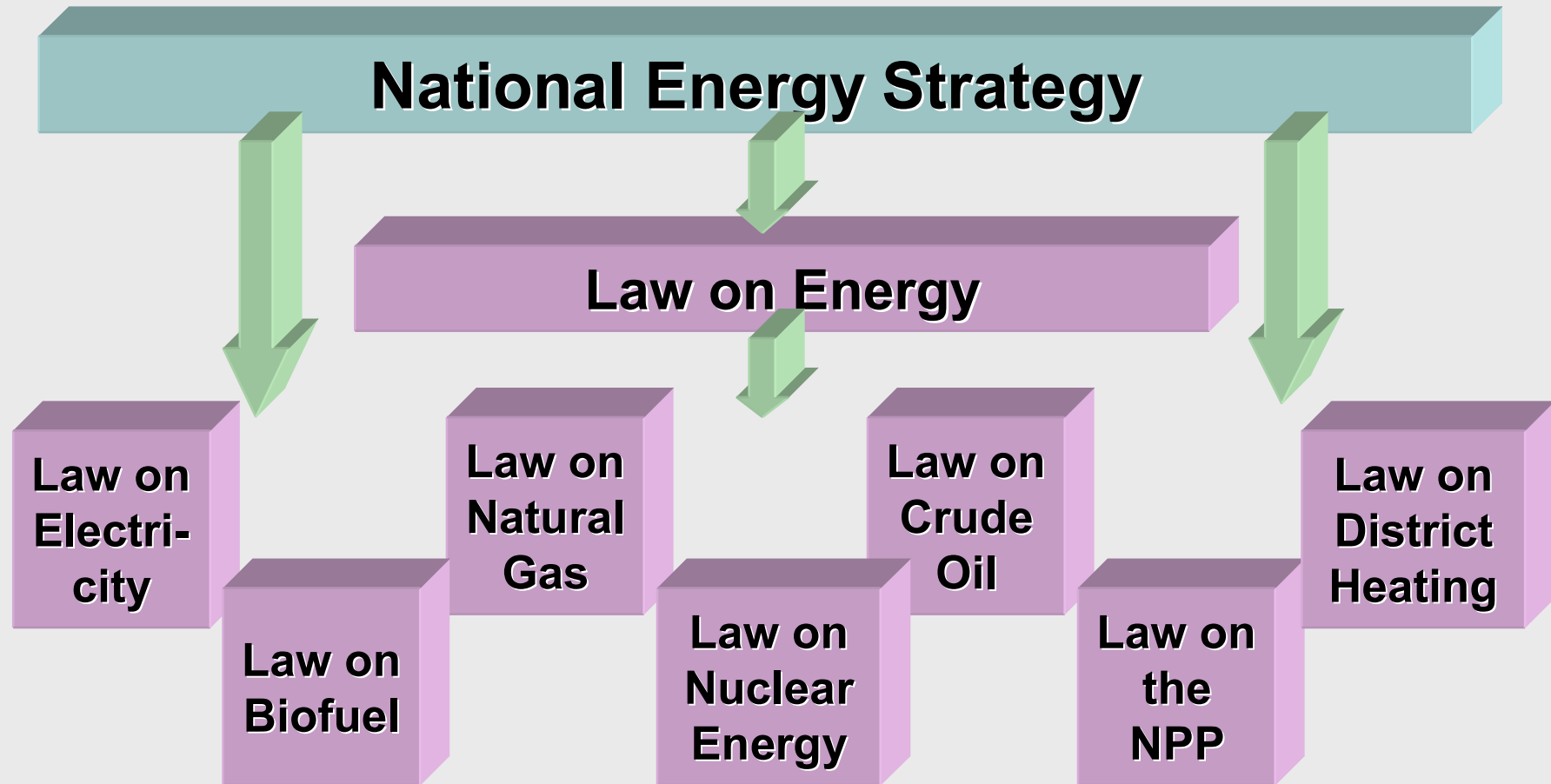


## POWER SECTOR FIGURES

Year	2005	2006	2007	2010	2012	2015
Gross Production, TWh	14,7	12,4	13,3	10,2	10,8	10,7
Export/-Import, TWh	2,9	0,4	1,3	-2,1	-2,1	-3,3
Gross Inland Consumption, TWh	11,8	12,0	12,0	12,3	12,9	14,0
Installed Capacity, MW	4930	4970	5020	3840	4380	4460
Max Peak Load, MW	1920	1990	2070	2300	2500	2680
Electricity Production Cost, €/MWh	28,9	28,9	33,9	89,2	77,1	78,5



# ENERGY LEGISLATION STRUCTURE





# MAIN GOALS SET IN NATIONAL ENERGY STRATEGY (1)

- To increase the share of **RES up to 20% by 2025**
- To increase the share of **biofuels (for transport) up to 20% by 2025**
- To increase the share of the electricity generated by **CHP's up to 35% by 2025**
- To **save 9% of final energy** over the period of 9 years (starting from 1 January 2008)



## **MAIN GOALS SET IN NATIONAL ENERGY STRATEGY (2)**

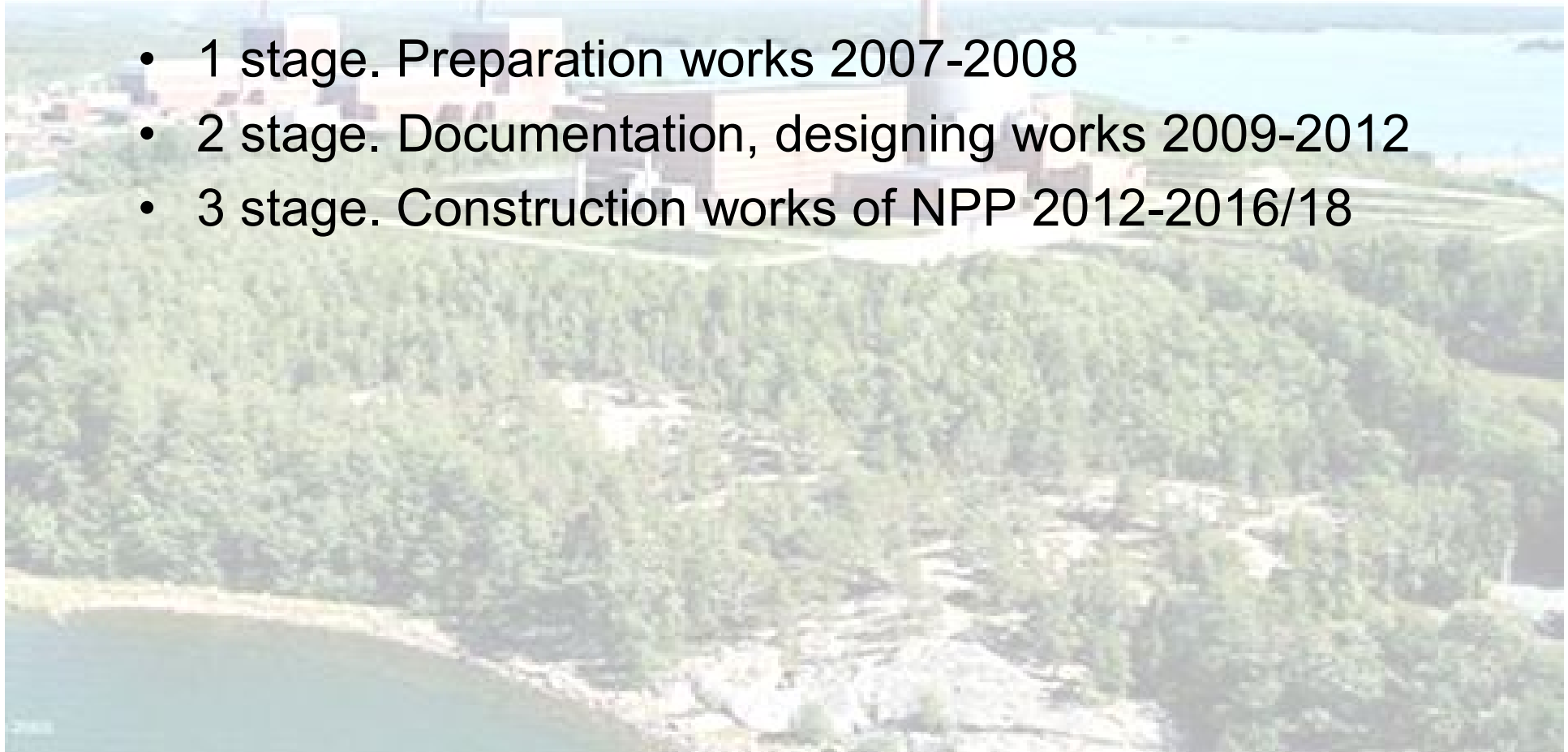
- To build new **nuclear power plant by 2015**
- To build **400 MW CCGT unit by 2010**
- To build **interconnections** with Poland and Sweden **by 2012**
- To construct a **natural gas storage** facility
- To implement technical measures necessary for synchronized operation with **UCTE by 2015**



# STRATEGICAL PROJECTS (1)

## New Nuclear Power Plant

- 1 stage. Preparation works 2007-2008
- 2 stage. Documentation, designing works 2009-2012
- 3 stage. Construction works of NPP 2012-2016/18





## STRATEGICAL PROJECTS (2)

### **New 400 MW CCGT unit in AB “Lietuvos elektrinė” site**

- Signature of the Contract 2008
- Construction works 2009-2011





# STRATEGICAL PROJECTS (3)

## Lithuania-Poland Interconnection

- Establishment of project implementation company 2008
- Designing of new 400 kV line Alytus-Elk 2008-2010
- Construction of new 400 kV line Alytus-Elk 2010-2012
- Reconstruction of Alytus 330 kV substation 2010-2012
- Designing of new 330 kV line Alytus-Kruonio HAE 2008-2010
- Construction of new 330 kV line Alytus-Kruonio HAE 2010-2012





# STRATEGICAL PROJECTS (4)

## Lithuania-Sweden Interconnection

- Feasibility study 2008
- Decision on project implementation 2007-2008
- Preparation of technical plan 2008-2010
- Environmental impact assessment 2008-2009
- Construction of undersea DC cable 2010-2012





## **STRATEGICAL PROJECTS (5)**

### **Implementation of technical measures necessary for synchronized operation of the Lithuanian Power System with UCTE**

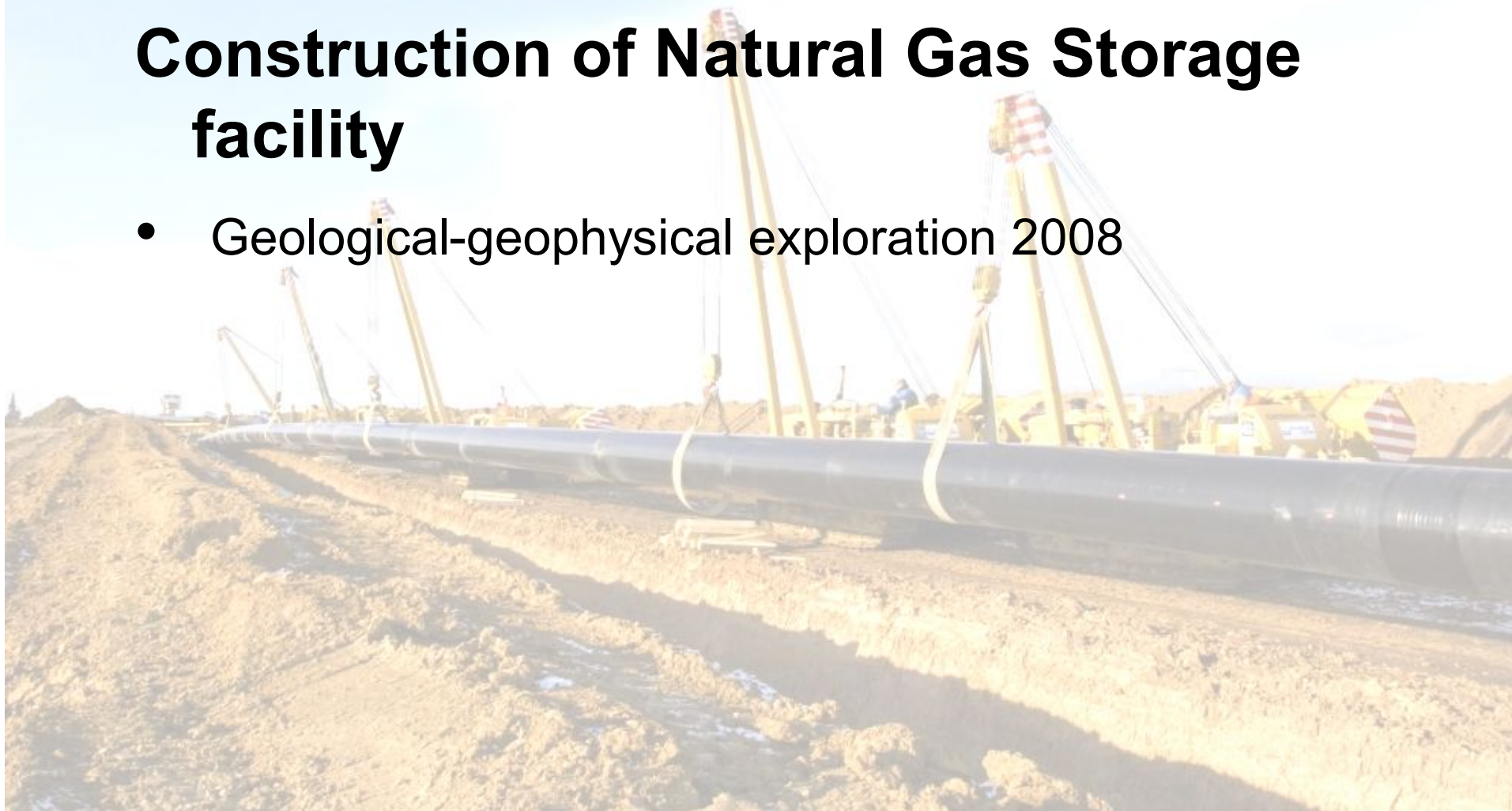
- Feasibility study 2008-2010
- Decision to connect to UCTE 2010-2011
- Implementation of necessary measures 2011-2013



# STRATEGICAL PROJECTS (6)

## Construction of Natural Gas Storage facility

- Geological-geophysical exploration 2008





# STRATEGICAL PROJECTS (7)

## Liquefied natural gas (LNG) import/export terminal in Lithuania or Baltic region

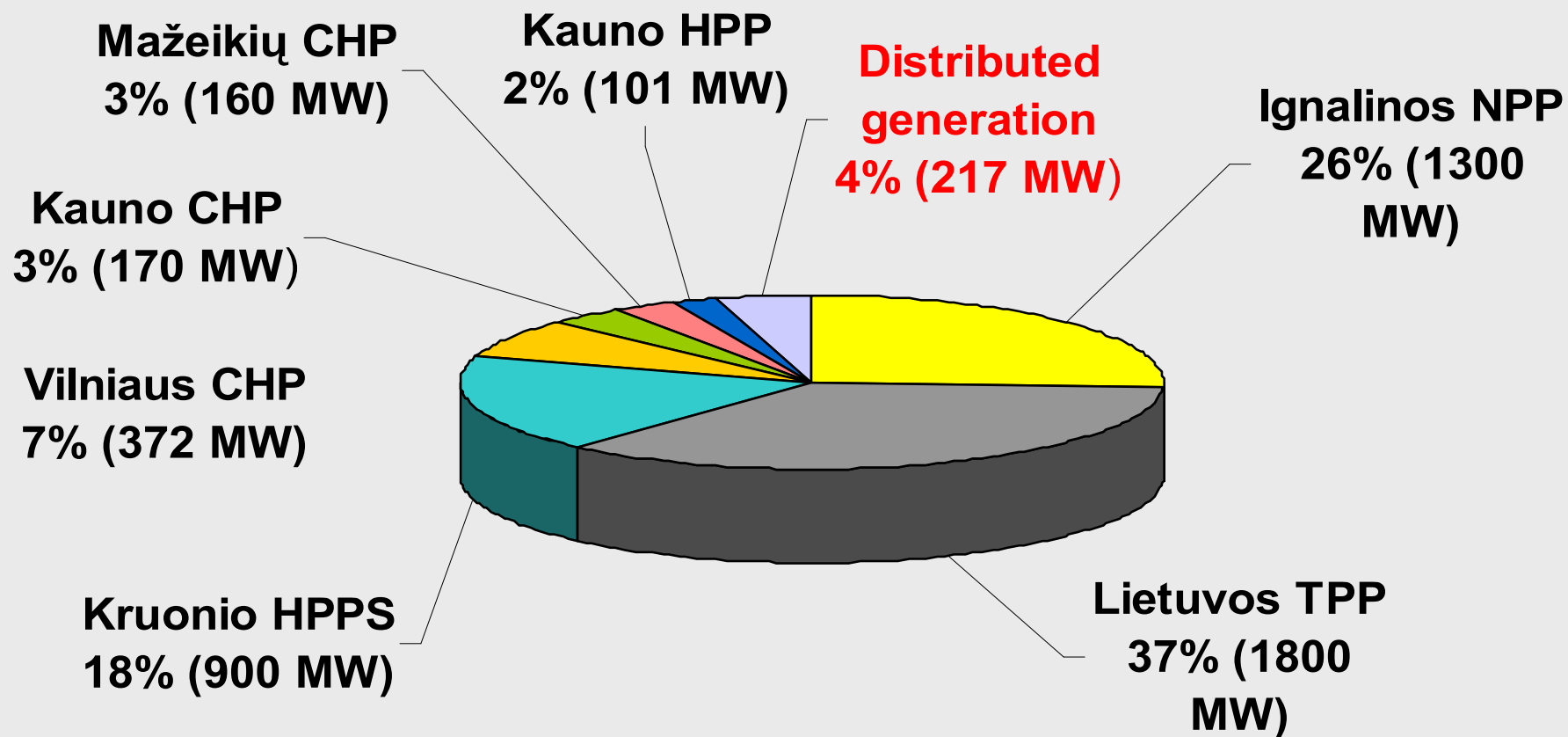
- Feasibility study 2008-2009





# GENERATION CAPACITIES

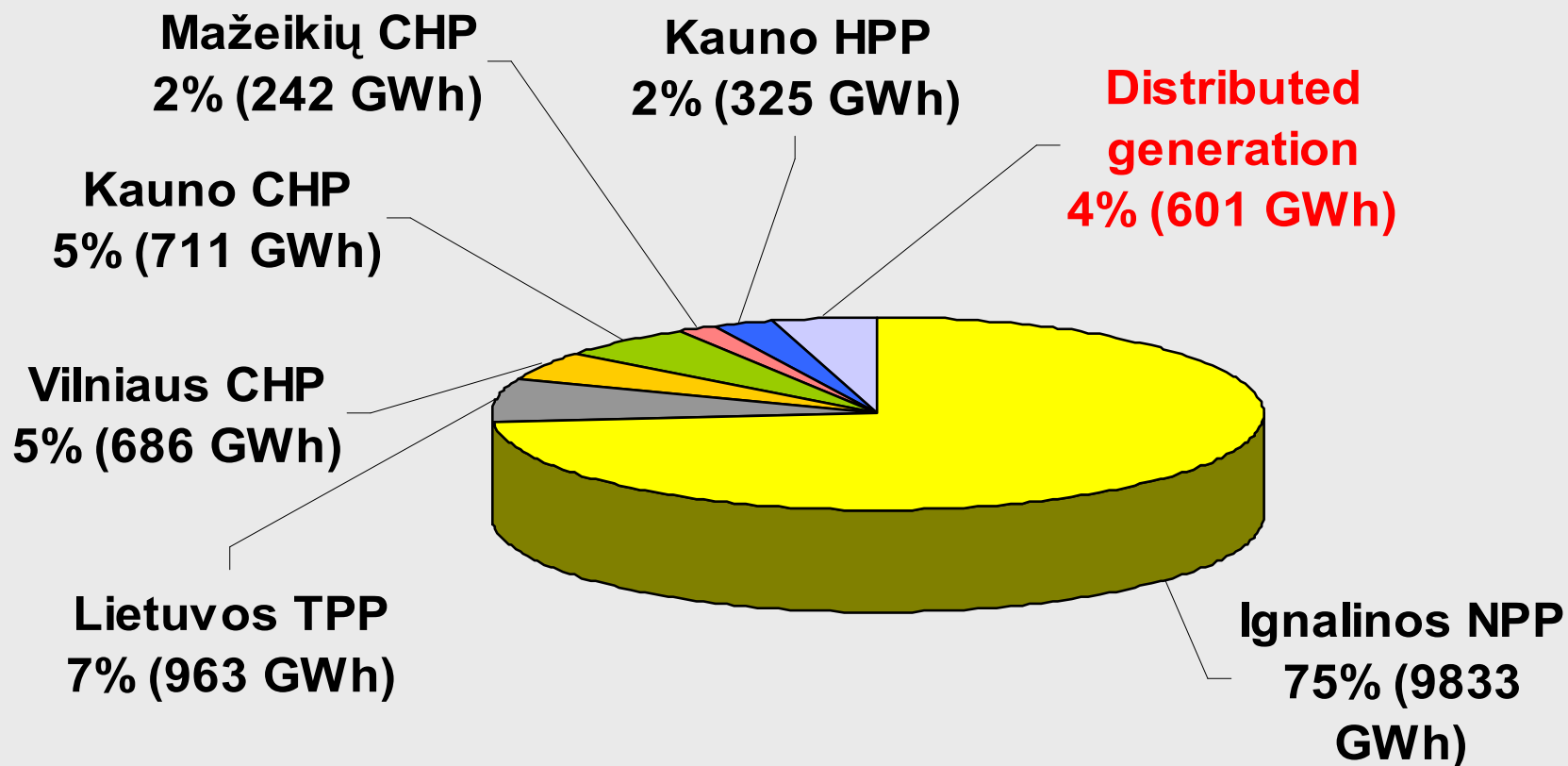
TOTAL INSTALLED CAPACITY 2007 - 5020 MW





# ELECTRICITY PRODUCTION

TOTAL ELECTRICITY PRODUCTION 2007 - 13,3 TWh





## CONCLUSIONS

- **Challenges from 2010:**
  - a) The uncertainty in energy resources supply field*
  - b) The big energy infrastructural projects*
  - c) Ambitious targets*
- **DG contribution is very important**



LIETUVOS RESPUBLIKOS  
ŪKIO MINISTERIJA

**THANK YOU FOR YOUR  
ATTENTION !!!**

**Evaldas Piesliakas**  
e.piesliakas@ukmin.lt